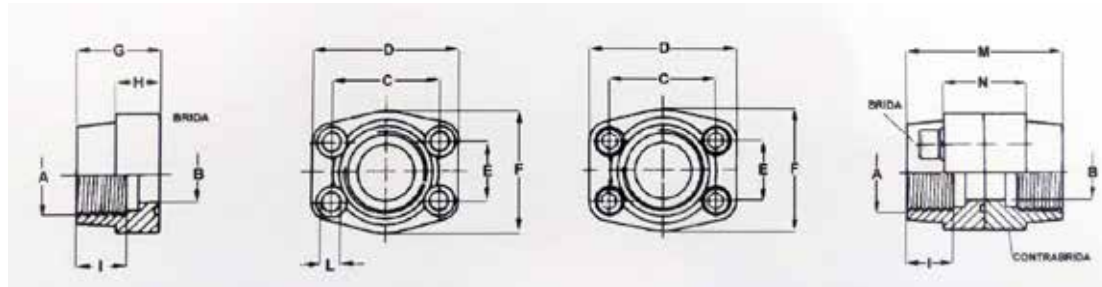


# Brida SAE Simple/Doble Rosca NPT



Material: **Acero Forjado**



Código Hidro-Tub	P. Max Kg/cm <sup>2</sup>	Medida SAE	D I M E N S I O N E S											Rosca Métrica	O'Ring	
			A	B	C	D	E	F	G	H	I	L	M			N
<b>3000 PSI</b>																
HT BR 08 ST S3	350	1/2"	1/2" NPT	13	38.10	54	17.48	46	36	16	19	9	72	32	M8	2-210
HT BR 08 06 S3	350	1/2"	3/8" NPT	13	38.10	54	17.48	46	36	16	19	9	72	32	M8	2-210
HT BR 12 S3	350	3/4"	3/4" NPT	19	47.63	65	22.23	50	36	18	19	11	72	36	M10	2-214
HT BR 12 08 S3	350	3/4"	1/2" NPT	13	47.63	65	22.23	50	36	18	19	11	72	36	M10	2-214
HT BR 16 S3	350	1"	1" NPT	25	52.37	70	26.19	55	38	18	22	11	76	36	M10	2-219
HT BR 16 12 S3	350	1"	1/4" NPT	25	52.37	70	26.19	55	35	21	19	11	70	42	M10	2-219
HT BR 20 S3	280	1 1/4"	1 1/4" NPT	32	58.72	79	30.18	68	41	21	22	11.5	82	42	M10	2-222
HT BR 20 16 S3	280	1 1/4"	1" NPT	25	58.72	81	30.18	65	42	25	22	11.5	84	50	M10	2-222
HT BR 24 S3	210	1 1/2"	1 1/2" NPT	38	69.85	93	35.71	78	45	25	24	13.5	90	50	M12	2-225
HT BR 24 20 S3	210	1 1/2"	1 1/4" NPT	32	69.85	95	35.71	78	45	27	24	13.5	90	54	M12	2-225
HT BR 32 S3	210	2"	2" NPT	51	77.77	102	42.88	90	45	25	30	13.5	90	50	M12	2-228
HT BR 32 24 S3	210	2"	1 1/2" NPT	38	77.77	102	42.88	90	45	25	26	13.5	90	50	M12	2-228
HT BR 40 S3	175	2 1/2"	2 1/2" NPT	63	88.90	114	50.80	105	50	25	30	13.5	100	50	M12	2-232
HT BR 48 S3	140	3"	3" NPT	73	106.38	134	61.93	124	50	27	34	17.5	100	54	M16	2-237
HT BR 64 S3	35	4"	4" NPT	99	130.18	162	77.77	146	48	27	34	17.5	96	54	M16	2-245

## Código para solicitar

**Brida sólo a rosca NPT** \_\_\_\_\_ Cód.: **HT BR.....S.....**

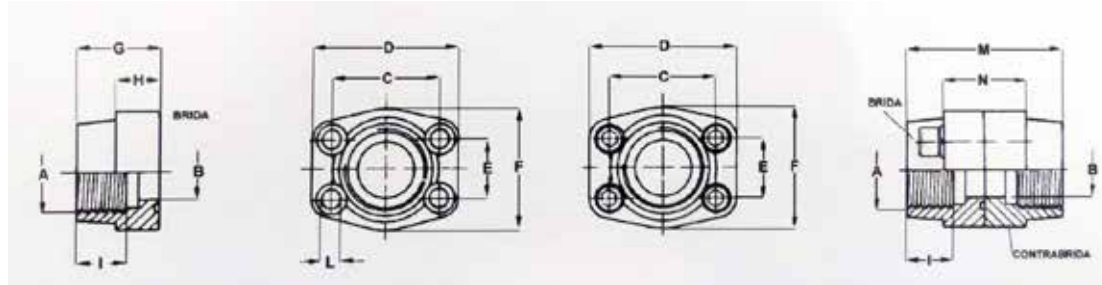
**ContraBrida sólo a rosca NPT** \_\_\_\_\_ Cód.: **HT CBR.....S.....**

**Brida doble NPT con tornillos métricos, arandelas y o'rings** \_\_\_\_\_ Cód.: **HT BC BR.....S.....**

# Brida SAE Simple/Doble Rosca NPT



Material: **Acero Forjado**



Código Hidro-Tub	P. Max Kg/cm <sup>2</sup>	Medida SAE	D I M E N S I O N E S											Rosca Métrica	O'Ring	
			A	B	C	D	E	F	G	H	I	L	M			N
<b>6000 PSI</b>																
HT BR 10 S6	450	1/2"	1/2" NPT	13	40.49	54	18.24	46	36	16	19	9	72	32	M8	2-210
HT BR 10 06 S6	450	1/2"	3/8" NPT	13	40.49	54	18.24	46	36	16	19	9	72	32	M8	2-210
HT BR 14 S6	450	1/4"	1/4" NPT	19	50.80	71	23.80	55	35	21	22	11	70	42	M10	2-214
HT BR 14 08 S6	450	3/4"	1/2" NPT	13	50.80	71	23.80	55	35	21	22	11	70	42	M10	2-214
HT BR 18 S6	450	1"	1" NPT	25	57.15	81	27.76	65	42	25	24	13	84	50	M12	2-219
HT BR 18 12 S6	450	1"	3/4" NPT	19	57.15	81	27.76	65	42	25	24	13	84	50	M12	2-219
HT BR 22 S6	450	1 1/4"	1 1/4" NPT	32	66.68	95	31.75	78	45	27	25	15	90	54	M14	2-222
HT BR 22 16 S6	450	1 1/4"	1" NPT	25	66.68	95	31.75	78	45	27	25	15	90	54	M14	2-222
HT BR 26 S6	450	1 1/2"	1 1/2" NPT	38	79.38	112	36.50	94	50	30	28	17	100	60	M16	2-225
HT BR 26 20 S6	450	1 1/2"	1 1/4" NPT	32	79.38	112	36.50	94	50	30	28	17	100	60	M16	2-225
HT BR 34 S6	450	2"	2" NPT	51	96.82	134	44.45	114	65	37	30	21	130	74	M20	2-228
HT BR 34 24 S6	450	2"	1/2" NPT	38	96.82	134	44.45	114	65	37	30	21	130	74	M20	2-228

### Código para solicitar

**Brida sólo a rosca NPT** \_\_\_\_\_ Cód.: **HT BR.....S.....**

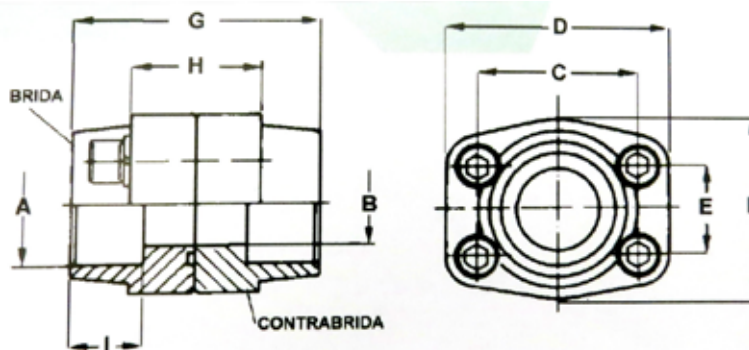
**ContraBrida sólo a rosca NPT** \_\_\_\_\_ Cód.: **HT CBR.....S.....**

**Brida doble NPT con tornillos métricos, arandelas y o'rings** \_\_\_\_\_ Cód.: **HT BC BR.....S.....**

# Brida SAE Simple/Doble p. Soldar SW interior



Material: **Acero Forjado**



Código Hidro-Tub	P. Max Kg/cm <sup>2</sup>	Medida SAE	D I M E N S I O N E S									Rosca Métrica	O'Ring
			A	B	C	D	E	F	G	H	I		
<b>3000 PSI</b>													
HT B SW 08 S3	350	1/2"	21.6	13	38.10	54	17.48	46	72	32	19	M8	2-210
HT B SW 08 06 S3	350	1/2"	17.5	13	38.10	54	17.48	46	72	32	19	M8	2-210
HT B SW 12 S3	350	3/4"	27.2	19	47.63	65	22.23	50	72	36	19	M10	2-214
HT B SW 16 S3	350	1"	34	25	52.37	70	26.19	55	76	36	19	M10	2-219
HT B SW 20 S3	280	1 1/4"	42.8	32	58.72	79	30.18	68	82	42	22	M10	2-222
HT B SW24 S3	210	1 1/2"	48.6	38	69.85	93	35.71	78	90	50	24	M12	2-225
HT B SW 32 S3	210	2"	61	51	77.77	102	42.88	90	90	50	26	M12	2-228
HT B SW 40 S3	175	2 1/2"	76.6	63	88.90	114	50.80	105	100	50	30	M12	2-232
HT B SW 48 S3	140	3"	90.5	73	106.38	134	61.93	124	100	54	34	M16	2-237
HT B SW 64 S3	35	4"	115.5	99	130.18	162	77.77	146	96	54	34	M16	2-245
<b>6000 PSI</b>													
HT B SW 10 S6	450	1/2"	21.6	13	40.49	54	18.24	46	72	32	19	M8	2-210
HT B SW 10 06 S6	450	1/2"	17.5	13	40.49	54	18.24	46	72	32	19	M8	2-210
HT B SW 14 S6	450	3/4"	27.2	19	50.80	71	23.80	55	70	42	22	M10	2-214
HT B SW 18 S6	450	1"	34	25	57.15	81	27.76	65	84	50	22	M12	2-219
HT B SW 22 S6	450	1 1/4"	42.8	32	66.68	95	31.75	78	90	54	25	M14	2-222
HT B SW 26 S6	450	1 1/2"	48.6	38	79.38	112	36.50	94	100	60	28	M16	2-225
HT B SW 34 S6	450	2"	61	51	96.82	134	44.45	114	130	74	24	M20	2-228

## Código para solicitar

Brida sólo \_\_\_\_\_ Cód.: **HT B SW.....S.....**

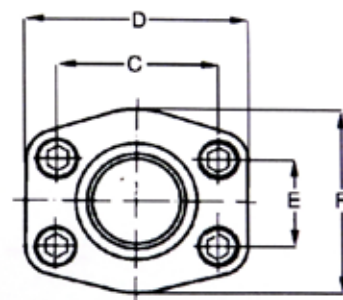
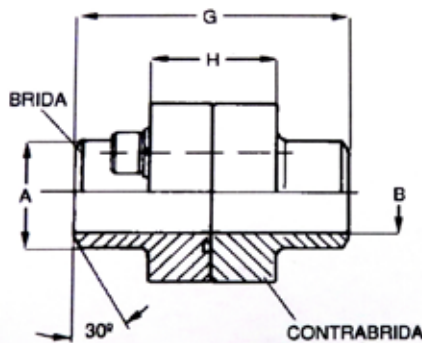
ContraBrida sólo \_\_\_\_\_ Cód.: **HT CB SW.....S.....**

Brida doble con tornillos métricos arandelas y o'rings \_\_\_\_\_ Cód.: **HT BCB SW.....S.....**

# Brida SAE Simple/Doble p. Soldar SW exterior



Material: **Acero Forjado**



Código Hidro-Tub	P. Max Kg/cm <sup>2</sup>	Medida SAE	DIMENSIONES								Rosca Métrica	O'Ring
			A	B	C	D	E	F	G	H		
<b>3000 PSI</b>												
HT BE SW 08 S3	350	1/2"	21.5	13	38.10	54	17.48	46	72	32	M8	2-210
HT BE SW 08 06 S3	350	1/2"	17.5	13	38.10	54	17.48	46	72	32	M8	2-210
HT BE SW 12 S3	350	1/4"	28	19	47.63	65	22.23	50	72	36	M10	2-214
HT BE SW 16 S3	350	1"	34	25	52.37	70	26.19	56	76	36	M10	2-219
HT BE SW 20 S3	280	1 1/4"	42.8	32	58.72	79	30.18	72	82	42	M10	2-222
HT BE SW 24 S3	210	1 1/2"	48.6	38	69.85	93	35.71	78	88	50	M12	2-225
HT BE SW 32 S3	210	2"	61	51	77.7	102	42.88	86	90	50	M12	2-225
HT BE SW 40 S3	175	2 1/2"	77	63	88.90	114	50.80	106	100	50	M12	2-232
HT BE SW 48 S3	140	3"	92	73	106.38	134	61.93	123	100	54	M16	2-237
HT BE SW 64 S3	35	4"	115.5	99	130.18	162	77.77	146	96	54	M16	2-245
<b>6000 PSI</b>												
HT BE SW 10 S6	450	1/2"	21.5	13	40.49	54	18.24	46	72	32	M8	2-210
HT BE SW 10 06 S6	450	1/2"	17.5	13	40.49	54	18.24	46	72	32	M8	2-210
HT BE SW 14 S6	450	3/4"	28	19	50.80	71	23.80	55	70	42	M10	2-214
HT BE SW 18 S6	450	1"	34	25	57.15	81	27.76	72	82	42	M12	2-219
HT BE SW 22 S6	450	1 1/4"	42.8	32	66.68	95	31.75	75	88	48	M14	2-222
HT BE SW 26 S6	450	1 1/2"	48.6	38	79.38	112	36.50	95	100	60	M16	2-225
HT BE SW 34 S6	450	2"	61	51	96.82	134	44.45	114	130	74	M20	2-228

### Código para solicitar

Brida sólo \_\_\_\_\_ Cód.: **HT BE SW.....S.....**

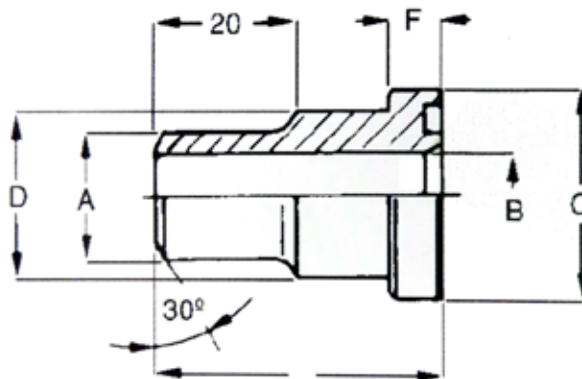
ContraBrida sólo \_\_\_\_\_ Cód.: **HT CBE SW.....S.....**

Brida doble con tornillos métricos, arandelas y o'rings \_\_\_\_\_ Cód.: **HT BCBE SW.....S.....**

# Conector con anillo flanged para soldar SW



Material: **Acero Forjado** / a pedido **Inoxidable**



Código Hidro-Tub	P. Max Kg/cm <sup>2</sup>	Medida SAE	DIMENSIONES						O'Ring
			A	B	C	D	E	F	
<b>3000 PSI</b>									
HT CPS 08 S3	350	1/2"	16	12	30.20	24	41	6.75	2-210
HT CPS 12 S3	350	1/4"	25	19	38.10	32	50	6.73	2-214
HT CPS 16 S3	350	1"	30	22	44.45	38	50	8.00	2-219
HT CPS 20 S3	280	1 1/4"	38	28	50.80	43	55	8.00	2-222
HT CPS 24 S3	210	1 1/2"	45	35	60.03	50	57	8.00	2-225
HT CPS 32 S3	210	2"	60	50	71.40	62	57	9.53	2-228
HT CPS 40 S3	175	2 1/2"	70	55	84.10	74	58	9.53	2-232
HT CPS 48 S3	140	3"	80	68	101.60	90	60	9.53	2-237
HT CPS 56 S3	35	3 1/2"	100	89	114.30	102	80	11.02	2-241
HT CPS 64 S3	35	4"	115	99	127.00	114.03	80	11.02	2-245
<b>6000 PSI</b>									
HT CPS 10 S6	450	1/2"	16	12	31.80	24	34	7.75	2-210
HT CPS 14 S6	450	1/4"	25	18	41.03	32	38	8.76	2-214
HT CPS 18 S6	450	1"	30	22	47.60	38	40	9.53	2-219
HT CPS 22 S6	450	1 1/4"	38	27	54.00	44	45	10.30	2-222
HT CPS 26 S6	450	1 1/2"	45	32	63.03	51	50	12.60	2-225
HT CPS 34 S6	450	2"	60	45	79.04	67	58	12.60	2-228

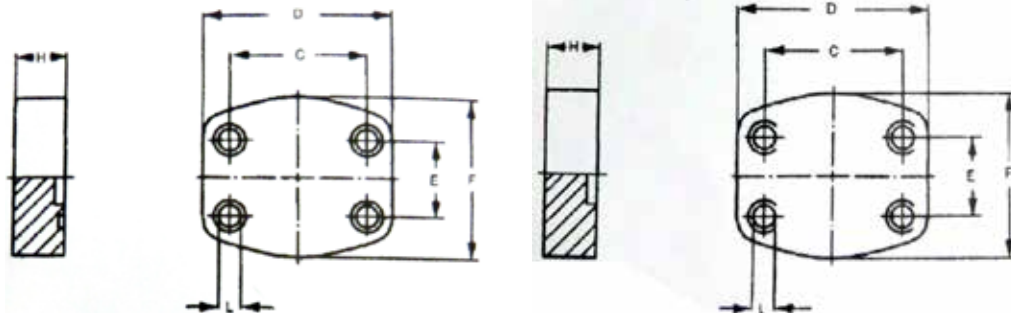
# Brida Contrabrida SAE Ciega



Material: **Acero Forjado**

**Brida**

**Contrabrida**



Código Hidro-Tub	P. Max Kg/cm <sup>2</sup>	Medida SAE	D I M E N S I O N E S						Rosca Métrica	O'Ring
			C	D	E	F	H	L		
<b>3000 PSI</b>										
HT BC 08 S3	350	1/2"	30.10	56	17.48	48	16	9	M8X30	2-210
HT BC 12 S3	350	1/4"	47.63	65	22.23	50	16	11	M10X35	2-210
HT BC 16 S3	350	1"	52.37	70	26.19	60	19	11	M10X35	2-214
HT BC 20 S3	280	1 1/4"	58.72	79	30.18	68	18	11.5	M10X40	2-219
HT BC 24 S3	210	1 1/2"	69.85	93	35.71	78	20	13.5	M12X45	2-222
HT BC 32 S3	210	2"	77.77	102	42.88	90	20	13.5	M12X45	2-225
HT BC 40 S3	175	2 1/2"	88.90	114	50.80	105	20	13.5	M12X45	2-228
HT BC 48 S3	140	3"	106.38	134	61.93	124	24	17.5	M16X50	2-232
HT BC 64 S3	35	4"	130.18	162	77.77	146	25	17.5	M16X50	2-241
<b>6000 PSI</b>										
HT BC 10 S6	450	1/2"	40.49	56	18.24	48	16	9	M8X30	2-210
HT BC 14 S6	450	1/4"	50.80	71	23.80	60	19	11	M10X35	2-214
HT BC 18 S6	450	1"	57.15	81	27.76	70	24	13	M12X45	2-219
HT BC 26 S6	450	1 1/2"	79.38	112	36.50	94	30	17	M16X50	2-225
HT BC 34 S6	450	2"	96.82	134	44.45	114	30	21	M20X60	2-228

### Código para solicitar

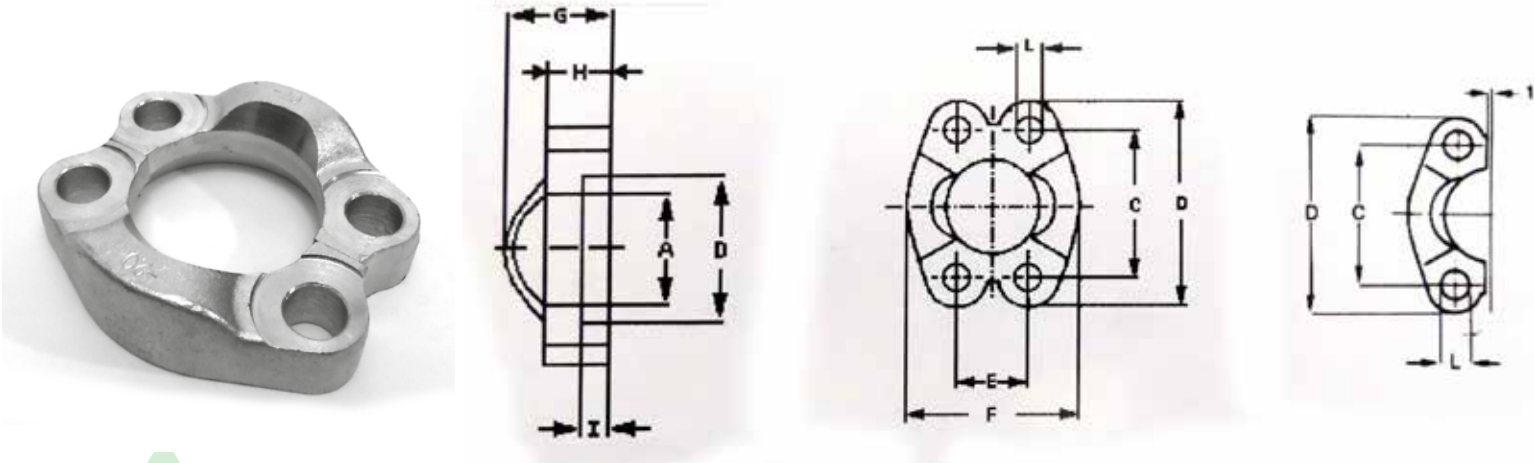
**Brida ciega sola** \_\_\_\_\_ Cód.: **HT BC**.....**S**.....

**ContraBrida ciega** \_\_\_\_\_ Cód.: **HT CBC**.....**S**.....

# Media Brida SAE



Material: **Acero Forjado / Zincado Bicromatizado**



Código Hidro-Tub	P. Max Kg/cm <sup>2</sup>	Medida SAE	D I M E N S I O N E S										Rosca Métrica
			D	A	C	E	B	F	G	H	I	L	
<b>3000 PSI</b>													
HT MB 08 S3	350	1/2"	30.95	24.25	38.10	17.50	55	46	20	13	6.20	8.75	M8
HT MB 12 S3	350	1/4"	38.90	32.13	47.63	22.22	65	52	22	14	6.20	10.75	M10
HT MB 16 S3	350	1"	45.25	38.50	52.35	26.20	70	59	24	16	7.50	10.75	M10
HT MB 20 S3	280	1 1/4"	51.60	43.70	58.72	30.02	80	73	22	14	7.50	10.75	M10
HT MB 24 S3	210	1 1/2"	61.10	50.80	69.85	35.70	95	83	25	16	7.50	13.00	M12
HT MB 32 S3	210	2"	72.25	62.75	77.77	42.90	102	97	26	16	9	13	M12
HT MB 40 S3	175	2 1/2"	84.95	74.93	88.90	50.80	115	108	38	19	9	13	M12
HT MB 48 S3	140	3"	102.40	90.93	106.38	61.92	135	131	41	22	9	17	M16
HT MB 56 S3	35	3 1/2"	115.10	102.36	120.65	69.85	152	140	30	22	10.70	17	M16
HT MB 64 S3	35	4"	127.80	115.06	130.18	77.78	162	152	35	25	10.70	17	M16
<b>6000 PSI</b>													
HT MB 10 S6	450	1/2"	32.55	24.65	40.49	18.24	56	42.02	22	16	7.25	8.75	M8
HT MB 14 S6	450	1/4"	42.05	32.51	50.80	23.80	71	60	28	19	8.25	10.75	M10
HT MB 18 S6	450	1"	48.40	38.85	57.15	27.76	81	70	30	24	9.00	13.00	M12
HT MB 22 S6	450	1 1/4"	54.75	44.45	66.68	31.75	95	77.20	38	27	9.75	15	M14
HT MB 26 S6	450	1 1/2"	64.30	51.55	79.38	36.50	113	95	45	30	12.10	17	M16
HT MB 34 S6	450	2"	80.15	67.55	96.82	44.45	133	114	52	37	12.10	21	M20